



# WE GO GARDENING

Newsletter of the West Chicago Garden Club

[www.westchicagogardenclub.org](http://www.westchicagogardenclub.org)

Volume 14 Issue 3 March 2011

## Inside this issue

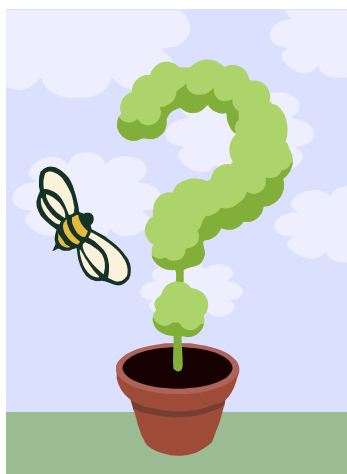
Non-Club Events	2
Club Information	
Planned WCGC Events	3
News from Kruse	4
Plant Sale Update	5
Catalog Interpretations	6
Musings from Members	7
Magazines-Thank You!	8
Book Corner	

**Babysitting**—The Club provides babysitting during its regular monthly meetings when held at Faith Community Church. There is no fee to you for the service, but if you plan to use it, please **call Linda Harlson** at 377-5750, so we can plan for the right number of children.

**Rides**— Need a ride to the meeting? Call Billie Childress at 231-1791 the Wednesday before the meeting.



## March 24th Meeting : "Right Place, Right Plant"



Have you ever stood in your garden and stared at a particular spot, wondering what's the **right plant** for that location?

**Mary Saba** from The Growing Place will talk to us in March about choosing the **right plant** for certain spots. Mary is the Landscape Dept. Manager for The Growing Place. She spent 15 years working as an interior designer before acknowledging her love of gardening and getting a horticultural degree 10

years ago, allowing her to design gardens. Experience in 5 states and 2 countries with many different climate and soil types have left her with a great appreciation for the trials and the joys of gardening.

**Faith Community Church at 910 Main Street in West Chicago**

**6:45 - refreshments and gathering**

**7:00 - brief business meeting**

**7:15 - speaker**



**Greet our newest member, Dave Urhausen , at the next meeting!**

**Next Meeting: Thursday, April 28th:**

**"What's Hot - What's Not"**

with Susan Schmitz from Ball Seed





## Upcoming events (outside the club)

**Platt Hill Nursery:** Design a Perennial Garden, Mar 26, 10 a.m. See <http://www.platthillnursery.com/seminars.html> or call 630-529-9394.

**Chicago Botanic Garden:** Garden Clubs of Illinois Wildflower & Native Plant Seminar, Sunday, Apr 17, 1 - 4 p.m., \$30 (\$10 add'l after Apr 4), registration form at [www.gardenglories.org](http://www.gardenglories.org).

**Heinz Brothers Greenhouse:** Start Your Garden from Seeds!, Saturday, Mar 26, 10 a.m., \$10, please RSVP by calling 630-377-6288 to register.

**Shady Hill:** Container Workshop, Mar 29, Apr 2, Apr 5, Apr 9, Apr 13, Apr 16, various times, bring your own containers and for a \$6-\$8 fee and the cost of the plants, get potted, growing plants from the greenhouse. <http://www.shadyhill.com/currentevents.html>, or call 630-365-56654 to register.

**Growing Place:** Grand Opening Celebration - Celebrating Our Roots, Saturday, April 2, all day, Naperville & Aurora, 1st 75 families receive a free bare root perennial or tree seedling. All kinds of roots on sale.

**DuPage Friends of Extension:** Gardeners' Christmas in April fundraiser, Saturday, April 2, 10 a.m. - noon, see page 8 for more information, or [www.DuPageFriendsOfExtension.org](http://www.DuPageFriendsOfExtension.org).

**DuPage County Forest Preserve:** Birding Field Trip at West Chicago Prairie, Saturday, Apr 9, 7 a.m. - 11 a.m., see [www.dupageforest.com/calendar.aspx?id=4294969268](http://www.dupageforest.com/calendar.aspx?id=4294969268) or call 630-933-7681 for information.



# PLATT HILL NURSERY

[www.platthillnursery.com](http://www.platthillnursery.com)

**Bloomington**  
222 W. Lake St.  
(630) 529-9394

*Hours: Mon-Sat 9am-6pm  
Sun 10am-5pm*

**Carpentersville**  
2400 Randall Rd.  
(Randall & Huntley Rds.)  
(847) 428-6767

You're invited to come explore, get inspired, learn  
and add some beauty to your garden at



2010 East Main St. (Rt. 64), St. Charles  
630.377.6288 [www.HeinzBrothers.com](http://www.HeinzBrothers.com)

Your Gardening Source....

## Club information

[www.westchicagogardenclub.org](http://www.westchicagogardenclub.org)

West Chicago Garden Club  
P. O. Box 313, West Chicago, IL 60186  
(630) 585-4005

## Membership information

Dues for 2011: Individual: \$15 Family: \$25

## Board Meetings

2nd Thursday each month at 7 p.m.

## Regular meeting location

Faith Community Church  
910 Main Street, West Chicago

## 2011 WCGC BOARD:

President:

Jeff Handel 630-231-6765, [jjhandeldds@yahoo.com](mailto:jjhandeldds@yahoo.com)

Vice President:

Dick Darrah 630-584-1900, [info@bwdarrah.com](mailto:info@bwdarrah.com)

Treasurer:

Barb Darrah 630-584-1900, [info@bwdarrah.com](mailto:info@bwdarrah.com)

Secretary:

Dee Soustek 630-393-0652, [dsoustek@aol.com](mailto:dsoustek@aol.com)

Program Co-Chairs:

Pauline Briggs 630-545-2234, [pmbiggs@juno.com](mailto:pmbiggs@juno.com)  
June Luther 630-876-1295, [june@markluther.com](mailto:june@markluther.com)

Information Director:

Elaine McCluskey 630-293-4773,  
[emcccluskey@sbcglobal.net](mailto:emcccluskey@sbcglobal.net)

Plant Sale Chair:

Tom Fessler 630-231-0535, [fess2000@aol.com](mailto:fess2000@aol.com)

Publicity:

Melissa Birch, 630-621-0128, [melissabirch@gmail.com](mailto:melissabirch@gmail.com)



## Planned WCGC Events - 2011

Date	Speaker/Organizer	Topic/Event	Date	Speaker/Organizer	Topic/Event
<b>24 Mar</b>	Mary Saba/Growing Place	Right Plant - Right Place	<b>23 Jun</b>	Dave Wanniger/Beaver Creek Nursery	TBD
<b>3 Apr</b>	All members - need crew of 16!	Plant Sale Potting Party- 1 - 4 p.m.	<b>28 Jul</b>	All members	President's Picnic
<b>10 Apr</b>	All members - need crew of 16!	Plant Sale Potting Party- 1 - 4 p.m.	<b>7 Aug</b>	Billie & Angie	Kruse "Open Garden" Party
<b>16 Apr</b>	All members - need crew of 16!	Plant Sale Potting Party- 9 am. - 12 noon	<b>25 Aug</b>	TBD/Growing Place	Unusual & Seldom Used Perennials
<b>23 Apr</b>	All members - need crew of 16!	Plant Sale Potting Party- 9 am. - 12 noon	<b>22 Sep</b>	TBD/Morton Arboretum	Trees
<b>28 Apr</b>	Susan Schmitz/Ball Seed	What's Hot - What's Not	<b>27 Oct</b>	Nancy Clifton/Chicago Botanic Garden	Holiday Decorating
<b>21 May</b>	All members	Plant Sale!	<b>17 Nov</b>	All members	Dinner & Garden Dollar Auction
<b>26 May</b>	TBD/Growing Place	Herbs			

### WANT TO GET INVOLVED, BUT DON'T HAVE MUCH TIME?

**You can still make a big difference in our club. Can you help organize a field trip or day tour?** Please see Jeff Handel (contact information page 2 or see him at the meeting).



*An Investment That Grows*

THE GARDEN CENTER IS  
BLOOMING WITH IDEAS!

MEYER  
LANDSCAPING, INC.  
Nursery, Landscaping Design & Construction

27W067 North Avenue  
West Chicago, IL 60185  
Tel: (630) 293-4800

VISIT OUR WEBSITE FOR SPECIALS!!!  
WWW.MEYER-LANDSCAPING.COM

LARGE TREES &  
SHRUBS, ROSES,  
PERENNIALS,  
& ANNUALS

SPRING HOURS  
MON-SAT: 9-5  
SUN: 10-4 (4/15-6/30)



**SHADY • HILL • GARDENS**

*Home grown plants since 1974*

Elburn, Illinois • (630) 365-5665  
www.shadyhill.com





## News from Kruse by Angie & Billie, Kruse House Garden Coordinators

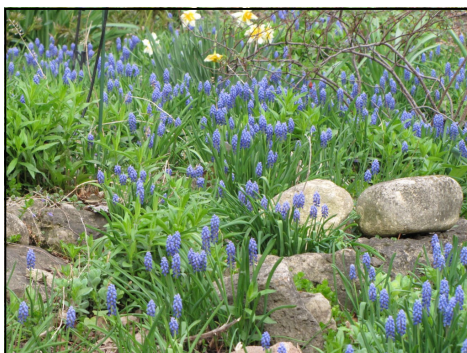
Calendar spring begins March 20. When spring weather begins is another story. Usually we have some teaser warm days and then reality check is interjected with some blustery cold wind and maybe some snow. However, Spring, cannot be denied! We will soon be reveling in saturated green and brilliant flashes of color.

The Grape Hyacinths are first on the scene in the Kruse Garden, popping up lovely displays throughout the gardens. Only 10" tall, they pack a wallop of color! This minor bulb, Muscari, has been in gardens for centuries. Its dark green foliage emerges in September when everything else is going to sleep. The thick grass like leaves elongate early spring and send up stalks topped with clusters (look like beads or grapes) of deep blue flowers. These unusual flowers hang down like bells and have six fused petals tipped in white. The mild musk like scent often goes unnoticed by humans but the bees don't miss it! Bees have hungry larvae to feed well before most flowers are blooming. This low maintenance long lasting bulb naturalizes readily and thus we are fortunate to enjoy plantings likely originating with the Kruse family. If you don't have this bulb in your garden you might want to try some. You will be rewarded for a life time. **Watch for bulbs at our very own plant sale.** We sometimes unearth a few as spring work in the garden proceeds.



Did someone mention the Plant Sale? Yes, the plant sale is certainly on the minds and agendas of the Krusies (aka TAB). We have more cute names for ourselves, than we have time, in the spring when everything needs attention at once. Therefore; we issue the often repeated pitch for help in the garden. **If you can spare some time** we would really appreciate your help. Please talk to Billie or Angie and we will work out the details. There are branches and garbage and plant debris to clear. All fun stuff to do! **Please join us!**

Being on the verge of spring brings awareness that other things, housecleaning for instance, will soon get short shrift from most gardeners. A gardener may not place high priority to cease and desist dust bunnies anytime of the year but surely not when the garden calls. One wonders if the **ladies of the Kruse House** devoted January and February to spring cleaning in preparation for time in the garden. What other ways may have they set the stage for gardening? Did they sharpen their own pruners and spades? What did they consider the harbingers of spring? Were they focused on getting the cold crop vegetables in the ground as early as possible so they could proudly be the first to harvest a meal of peas? Whatever the particulars may have been its safe to say there was excitement and anticipation as a new gardening year unfolded.



Over this next month we encourage you to listen for the song of the frogs....take time to temper ceaseless work with ceaseless wonder. ~~~~~ A&B



## PLANT SALE UPDATE by Tom Fessler

**Potting Parties:** We need 16 people to work at each party. We have folks signed up for about half the slots already! Please check your calendars and be ready to make a commitment at the March meeting...Sunday afternoons (1-4PM) on April 3 & 10 or Saturday mornings (9-noon) April 16 & 23. All potting will be done at the Manville Oaks Barn. See map below. There are jobs for everyone to do. Come have fun and earn garden dollars!

**Donate Plants:** We're looking for plants to pot up for the sale. We need a wide variety to offer our customers. You are welcome to dig your own donations or more than welcome to request the digging squad to come dig your plants for you. There is a sign-up sheet started for the digging squad. It will be available at the March meeting if you wish to add your name. We are looking any/all plants you might have for us. Some specific requests would be: mint, dill, rhubarb, onions, chives, herbs and perennials of any kind, dahlia or canna tubers. We appreciate small (1-2 plants) or large donations. If you have questions Angie or Tom can help.

**Aprons:** Last year at the sale Garden Club members were identified by wearing an apron with watering can logo on it. If anyone has one of these aprons at home please bring it to meeting with you and leave it at the reception desk. Thanks! Barbara Darrah is making a few more of these aprons for us but we need as many available as possible.

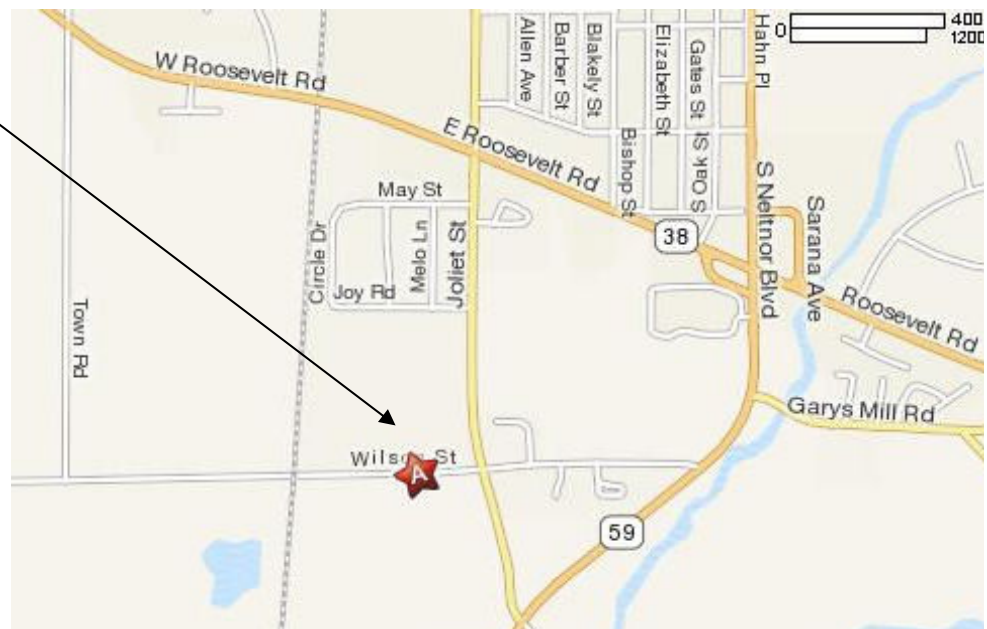
**Seed Starts:** If you are starting seeds for yourself could you do a few for plant sale as well? Vegetables of any kind would be appreciated.

**Note From the Author:** Participating in garden club activities is always rewarding for me. You are all a pleasure to work with! Our Plant Sale has always been a tremendous success because everyone shares their time and talents and plants. **Please know that you, and all you do, are greatly appreciated!**

### Map:

#### Manville Oaks Park Barn:

30W150 W. Wilson St  
West Chicago



**REMEMBER - THE PLANT SALE IS ON SATURDAY, MAY 21ST, 9 a.m. - 3 p.m.**



## Interpreting Garden Catalogs

Thanks to Billie Childress for sending along this translation of garden catalog terminology she received from her niece. Does it hit home for you?

### IF THE CATALOG SAYS....

### IT REALLY MEANS....

Attracts butterflies	Attracts bees
Beautiful foliage	The flowers are pathetic
Blue	Purple! Plant people are notoriously color-blind
Delicate Flowers	You need a magnifying glass to see them
Designers colors	Paper-bag beige
Dormant in hot weather	Looks dead most of the year
Drought tolerant	Prone to rot
Edible flowers	Deer eat it
Evergreen	Leaves turn dark maroon for the winter
Excellent for cutting	The single flower is at the top of a spindly 2-foot stalk
Flowers all summer long	It has one minute, insipid bloom in June and I thought I saw another one in August
Groundcover	See vigorous
Hardy (no mention of zone)	Hardy in Surrey, England
Heavy feeder	Yellowish foliage and puny flowers unless fed constantly
Invasive	It will come up through a foot of concrete
Late to emerge	Looks dead most of the year
Native	It's a common weed!
Nearly thornless	This plant has slightly fewer 3-inch barbs than usual
Sow seed in site	Say good bye to those seeds, the weeds will germinate first
Tall	It lies on the ground most of the time
Tolerates lean soil	Leggy stems with occasional puny flowers if fed anything
Unusual	One of the ugliest plants on the planet
Vigorous	The smallest particle of this plant will take over your garden and you can't ever get rid of it
Winter interest	Probably looks stunning under the snow

## Celebrating 86 Years & Still Growing

A lot has changed over 86 years but our commitment to our customers and to our community has not.

Quality Plants & Expert Service  
... Since 1925



Come to the Grower

**WASCO**  
NURSERY  
& GARDEN CENTER

630-584-4424

6 miles west of Randall Road on  
Route 64, St. Charles  
1 mile west of Wasco  
[www.wasconursery.com](http://www.wasconursery.com)

160 Acres of Nursery Stock • 10 Acre Garden Center • Landscape Design & Installation

**Phil Graf**  
Certified Arborist

1652 East Main Street  
Suite 20  
St. Charles, IL 60174  
Phone 630.762.2400  
Fax 630.578.1304  
[phil@graftreecare.com](mailto:phil@graftreecare.com)  
[www.graftreecare.com](http://www.graftreecare.com)





## Musings from Members

*This month starts a column where WCGC member can put help wanted ads or other kinds of appeals. Have something you want to advertise - contact the Information Director (see page 2).*

### Wanted: Gardening Assistant

Starting April 2011, about 8 hrs per week through growing season, hours flexible  
Call Billie Childress (630) 231-1791

### Help with your Income Taxes?

If you need help with your 2010 federal and state income taxes, contact your local AARP tax counseling center. It is convenient, confidential, fast and free, and you don't have to be over 65 or a member of AARP. Service is limited to individual returns—no businesses, partnerships, etc. To schedule an appointment, call a park district office:

Glen Ellyn—appointments on Mondays, call 630-858-2463 or

Wheaton—appointments on Tuesdays, call 630-665-1415.

For more information, contact Mike Saad (630-653-1350)

### Wanted: Part Time/Seasonal Retail Sales Associate for the Meyer Landscaping Garden Center

About 16-20 hours per week through the growing season, starting April 2011. Call (630) 293-4800 or email [mevergc@aol.com](mailto:mevergc@aol.com)

### For Sale: Bird Bath

I have a large bird bath I would like to let go. It is cast stone. It has a tiny crack on the top, but does not leak. I paid \$90 for it and I would let it go for \$25. Shirley Remes, 847-697-4796, [sremes@comcast.net](mailto:sremes@comcast.net).



**Prestige**  
NURSERY GARDEN CENTER INC.

28 W. 761 Army Trail Rd, Bartlett  
**(630)289-4868**  
[www.prestige-nursery.com](http://www.prestige-nursery.com)

*Outdoor living done right...*  
design | build | maintain | enjoy!

8 acres of locally grown quality plants

celebrating 75

**The Growing Place**

Celebrations all season!

Landscape Seminar 3/19  
Grand opening 4/2  
Celebrating our roots!  
Order bare root trees & save.  
Free plant to first 75 families.  
Talks & root beer!!

Naperville & Aurora  
630.355.4000 & 630.820.8088  
[thegrowingplace.com](http://thegrowingplace.com)

Certified Arborists on Staff

**ABBOTT**  
Tree Care Professionals  
**(630)681-8733**  
[www.abbotttreecare.com](http://www.abbotttreecare.com)

**FREE ESTIMATES • FULLY INSURED**

- 24-Hour Emergency Storm Damage Service
- Crane Removal
- Tree Trimming
- Tree Removal
- Stump Removal
- Land Clearing
- Tree Spraying
- Deep Root Feeding

Family owned and operated for over 15 years!



\*\*\*\*\*  
\* **Thank you from the West Chicago Library** \*  
\* Through the May plant sale and member dues, the WCGC is able to provide interesting \*  
\* programs for its members, subsidize field trips and garden workshops, and support the \*  
\* maintenance and renovation of the historic Kruse House garden. In addition, the club \*  
\* shares its love of gardening with the West Chicago community by paying for magazine \*  
\* subscriptions located at the West Chicago Public Library. The club recently received a \*  
\* thank you from the library for enabling these magazines to be available \*  
\* to the public: \*  
\* **American Gardener** **Chicago Home and Garden** \*  
\* **Chicagoland Gardening** **English Gardens** \*  
\* **Fine Gardening** **Garden Gate** \*  
\* **Horticulture** **Northern Gardener** \*  
\*\*\*\*\*



## DuPage Friends of Extension Presents: Gardeners' Christmas in April



Hand spade,  
wheelbarrow  
Gloves, pruners,  
hand rake, pots,  
watering can,  
compost



Free Admission

**Featuring:**

- Silent Auction
- Guest Speakers

**DATE:** April 2, 2011  
**TIME:** 10:00 AM – NOON  
**LOCATION:** 1100 Warrenville Rd.  
University Of Illinois Extension Campus  
Naperville, IL  
[www.DuPageFriendsofExtension.org](http://www.DuPageFriendsofExtension.org)

Proceeds benefit the University of IL Extension:  
Master Gardeners, 4-H, Youth and Adult Programs